

CYLINDERS



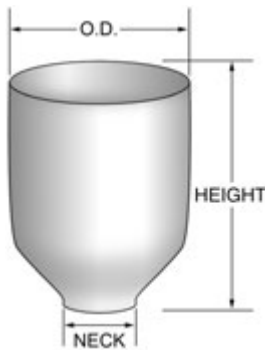
Tapered Cylinders

DESCRIPTION

Crown Plastics tapered cylinders are designed for commercial and residential post top application.

MATERIALS

- **Polycarbonate** - UV stabilized with continuous operating temperature of 100°C to 125°C and high impact resistance down to -40°C, transmittance of 88% (application dependent). Polycarbonate tapered cylinders are available in clear or white.
- **Acrylic** - UV resistant with continuous operating temperature up to 90°C and transmittance of 92% (application dependent). Acrylic tapered cylinders are available in clear or white.
- **LD Acrylic (Visual Comfort)** - UV resistant with continuous operating temperature up to 90°C and transmittance of 90% to 94% (application dependent).



ITEM NO.	OD	HEIGHT	ID (NECK)	OD (NECK)	MATERIAL	COLOR
25900-CL	11.88"	16.00"	5.50"	5.75"	Acrylic	Clear
25900-WH	11.88"	16.00"	5.50"	5.75"	Acrylic	White
25900-LD	11.88"	16.00"	5.50"	5.75"	LD Acrylic	VC Frost
15900-CL	11.88"	16.00"	5.50"	5.75"	Polycarbonate	Clear
15900-WH	11.88"	16.00"	5.50"	5.75"	Polycarbonate	White

MAXIMUM TEMPERATURES

No warranty or guarantee is expressed or implied as only the user can determine the suitability of a product for his or her purpose. Maximum working temperature is 90° C for Acrylic and between 100° C and 125° C for Polycarbonates, depending on products chosen. Actual wattage ratings are influenced by many factors including Fixture Type, Bulb Location and Ambient Temperature.

ITEM NUMBER SUFFIX CODES

STYLE NUMBER	COLOR
25900 = Acrylic	CL = CLEAR
15900 = Polycarbonate	WH = WHITE
	LD = VC FROST

Dimensions are nominal

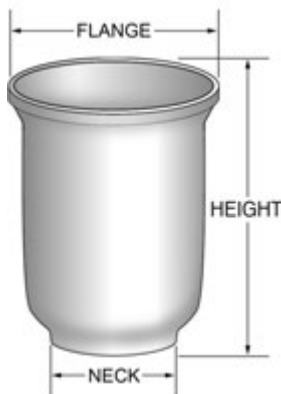
Flanged Tapered Cylinders

DESCRIPTION

Crown Plastics flanged tapered cylinders are designed for commercial and residential post top application.

MATERIALS

- **Polycarbonate** - UV stabilized with continuous operating temperature of 100°C to 125°C and high impact resistance down to -40°C, transmittance of 88% (application dependent). Polycarbonate tapered cylinders are available in clear or white.
- **Acrylic** - UV resistant with continuous operating temperature up to 90°C and transmittance of 92% (application dependent). Acrylic tapered cylinders are available in clear or white.
- **LD Acrylic (Visual Comfort)** - UV resistant with continuous operating temperature up to 90°C and transmittance of 90% to 94% (application dependent).



ITEM NO.	OD (FLANGE)	HEIGHT	ID (NECK)	OD (NECK)	MATERIAL	COLOR
25901-CL	12.27"	16.35"	7.22"	7.40"	Acrylic	Clear
25901-WH	12.27"	16.35"	7.22"	7.40"	Acrylic	White
25901-LD	12.27"	16.35"	7.22"	7.40"	LD Acrylic	VC Frost
25902-CL	11.00"	13.50"	7.25"	7.50"	Acrylic	Clear
25902-WH	11.00"	13.50"	7.25"	7.50"	Acrylic	White
25902-LD	11.00"	13.50"	7.25"	7.50"	LD Acrylic	VC Frost
15901-CL	12.27"	16.35"	7.22"	7.40"	Polycarbonate	Clear
15901-WH	12.27"	16.35"	7.22"	7.40"	Polycarbonate	White
15902-CL	11.00"	13.50"	7.25"	7.50"	Polycarbonate	Clear
15902-WH	11.00"	13.50"	7.25"	7.50"	Polycarbonate	White

MAXIMUM TEMPERATURES

No warranty or guarantee is expressed or implied as only the user can determine the suitability of a product for his or her purpose.

Maximum working temperature is 90° C for Acrylic and between 100° C and 125° C for Polycarbonates, depending on products chosen.

Actual wattage ratings are influenced by many factors including Fixture Type, Bulb Location and Ambient Temperature.

ITEM NUMBER SUFFIX CODES

STYLE NUMBER	COLOR
2590X = Acrylic	CL = CLEAR
1590X = Polycarbonate	WH = WHITE
	LD = VC FROST

Dimensions are nominal

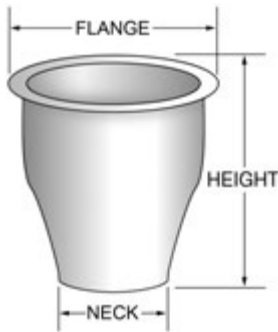
Hourglass Lens

DESCRIPTION

Crown Plastics hourglass lenses are designed for commercial and residential post top application.

MATERIALS

- **Polycarbonate** - UV stabilized with continuous operating temperature of 100°C to 125°C and high impact resistance down to -40°C, transmittance of 88% (application dependent). Polycarbonate tapered cylinders are available in clear or white.
- **Acrylic** - UV resistant with continuous operating temperature up to 90°C and transmittance of 92% (application dependent). Acrylic tapered cylinders are available in clear or white.
- **LD Acrylic (Visual Comfort)** - UV resistant with continuous operating temperature up to 90°C and transmittance of 90% to 94% (application dependent).



ITEM NO.	OD (FLANGE)	HEIGHT	ID (NECK)	OD (NECK)	MATERIAL	COLOR
25910-CL	14.50"	12.50"	7.62"	7.81"	Acrylic	Clear
25910-WH	14.50"	12.50"	7.62"	7.81"	Acrylic	White
25910-LD	14.50"	12.50"	7.62"	7.81"	LD Acrylic	VC Frost
15910-CL	14.50"	12.50"	7.62"	7.81"	Polycarbonate	Clear
15910-WH	14.50"	12.50"	7.62"	7.81"	Polycarbonate	White

MAXIMUM TEMPERATURES

No warranty or guarantee is expressed or implied as only the user can determine the suitability of a product for his or her purpose. Maximum working temperature is 90° C for Acrylic and between 100° C and 125° C for Polycarbonates, depending on products chosen. Actual wattage ratings are influenced by many factors including Fixture Type, Bulb Location and Ambient Temperature.

ITEM NUMBER SUFFIX CODES

STYLE NUMBER	COLOR
25910 = Acrylic	CL = CLEAR
15910 = Polycarbonate	WH = WHITE
	LD = VC FROST

Dimensions are nominal

6" Smooth Cylinders

DESCRIPTION

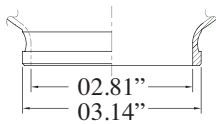
Crown Plastics cylinders are designed for commercial and residential applications and are available with fitter neck and screw neck.

MATERIALS

- **Acrylic** - UV resistant with continuous operating temperature up to 90°C and transmittance of 92% (application dependent). Acrylic cylinders are available in clear or white

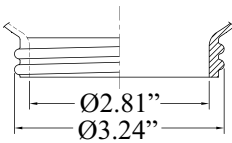


FITTER NECK (F)



ITEM NO.	HEIGHT	WIDTH	ID (NECK)	OD (NECK)	MATERIAL	COLOR
25006-CL-3F	6.12"	3.75"	2.81"	3.14"	Acrylic	Clear
25006-WH-3F	6.12"	3.75"	2.81"	3.14"	Acrylic	White

SCREW NECK (S)



ITEM NO.	HEIGHT	WIDTH	ID (NECK)	OD (NECK)	MATERIAL	COLOR
25006-CL-3S	6.12"	3.75"	2.81"	3.24"	Acrylic	Clear
25006-WH-3S	6.12"	3.75"	2.81"	3.24"	Acrylic	White

MAXIMUM TEMPERATURES

No warranty or guarantee is expressed or implied as only the user can determine the suitability of a product for his or her purpose. Maximum working temperature is 90° C for Acrylic and between 100° C and 125° C for Polycarbonates, depending on products chosen. Actual wattage ratings are influenced by many factors including Fixture Type, Bulb Location and Ambient Temperature.

ITEM NUMBER SUFFIX CODES

STYLE NUMBER	COLOR	NECK
25006 = Acrylic	CL = CLEAR WH = WHITE	3S = 3.24" Screw 3F = 3.14" Fitter

Dimensions are nominal

6" Prismatic Cylinders

DESCRIPTION

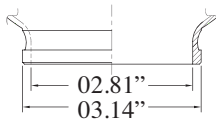
Crown Plastics prismatic cylinders are designed for commercial and residential applications and are available with fitter neck, and screw neck.

MATERIALS

- **Polycarbonate** - UV stabilized with continuous operating temperature of 100°C to 125°C and high impact resistance down to -40°C, transmittance of 88% (application dependent). Polycarbonate tapered cylinders are available in clear or white.
- **Acrylic** - UV resistant with continuous operating temperature up to 90°C and transmittance of 92% (application dependent). Acrylic cylinders are available in clear or white

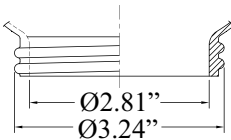


FITTER NECK (F)



ITEM NO.	HEIGHT	WIDTH	ID (NECK)	OD (NECK)	MATERIAL	COLOR
25106-CL-3F	6.12"	3.75"	2.81"	3.14"	Acrylic	Clear
25106-WH-3F	6.12"	3.75"	2.81"	3.14"	Acrylic	White
15106-CL-3F	6.12"	3.75"	2.81"	3.14"	Polycarbonate	White

SCREW NECK (S)



ITEM NO.	HEIGHT	WIDTH	ID (NECK)	OD (NECK)	MATERIAL	COLOR
25106-CL-3S	6.12"	3.50"	2.81"	3.24"	Acrylic	Clear
25106-WH-3S	6.12"	3.50"	2.81"	3.24"	Acrylic	White
15106-CL-3S	6.12"	3.50"	2.81"	3.24"	Polycarbonate	White

MAXIMUM TEMPERATURES

No warranty or guarantee is expressed or implied as only the user can determine the suitability of a product for his or her purpose. Maximum working temperature is 90° C for Acrylic and between 100° C and 125° C for Polycarbonates, depending on products chosen. Actual wattage ratings are influenced by many factors including Fixture Type, Bulb Location and Ambient Temperature.

ITEM NUMBER SUFFIX CODES

STYLE NUMBER	COLOR	NECK
25106 = Acrylic	CL = CLEAR WH = WHITE	3S = 3.24" Screw 3F = 3.14" Fitter

Dimensions are nominal

6" Prismatic Domed Cylinders

DESCRIPTION

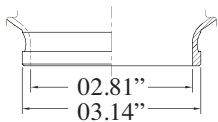
Crown Plastics prismatic domed cylinders are designed for commercial and residential applications and are available with fitter neck and screw neck.

MATERIALS

- **Polycarbonate** - UV stabilized with continuous operating temperature of 100°C to 125°C and high impact resistance down to -40°C, transmittance of 88% (application dependent). Polycarbonate cylinders are available in clear or white.
- **Acrylic** - UV resistant with continuous operating temperature up to 90°C and transmittance of 92% (application dependent). Acrylic cylinders are available in clear or white.

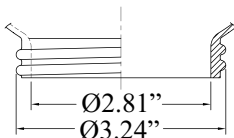


FITTER NECK (F)



ITEM NO.	HEIGHT	WIDTH	ID (NECK)	OD (NECK)	MATERIAL	COLOR
25105-CL-3F	6.66"	4.00"	2.81"	3.14"	Acrylic	Clear
25105-WH-3F	6.66"	4.00"	2.81"	3.14"	Acrylic	White
15105-CL-3F	6.66"	4.00"	2.81"	3.14"	Polycarbonate	Clear
15105-WH-3F	6.66"	4.00"	2.81"	3.14"	Polycarbonate	White

SCREW NECK (S)



ITEM NO.	HEIGHT	WIDTH	ID (NECK)	OD (NECK)	MATERIAL	COLOR
25105-CL-3S	6.66"	4.00"	2.81"	3.24"	Acrylic	Clear
25105-WH-3S	6.66"	4.00"	2.81"	3.24"	Acrylic	White
15105-CL-3S	6.66"	4.00"	2.81"	3.24"	Polycarbonate	Clear
15105-WH-3S	6.66"	4.00"	2.81"	3.24"	Polycarbonate	White

MAXIMUM TEMPERATURES

No warranty or guarantee is expressed or implied as only the user can determine the suitability of a product for his or her purpose.

Maximum working temperature is 90° C for Acrylic and between 100° C and 125° C for Polycarbonates, depending on products chosen.

Actual wattage ratings are influenced by many factors including Fixture Type, Bulb Location and Ambient Temperature.

ITEM NUMBER SUFFIX CODES

STYLE NUMBER	COLOR	NECK
25105 = Acrylic	CL = CLEAR	3F= 3.14" Fitter
15105 = Polycarbonate	WH = WHITE	3S= 3.24" Screw

Dimensions are nominal

8" Prismatic Cylinders

DESCRIPTION

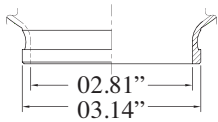
Crown Plastics prismatic cylinders are designed for commercial and residential applications and are available with fitter neck and screw neck.

MATERIALS

- **Polycarbonate** - UV stabilized with continuous operating temperature of 100°C to 125°C and high impact resistance down to -40°C, transmittance of 88% (application dependent). Polycarbonate cylinders are available in clear or white.
- **Acrylic** - UV resistant with continuous operating temperature up to 90°C and transmittance of 92% (application dependent). Acrylic cylinders are available in clear or white.

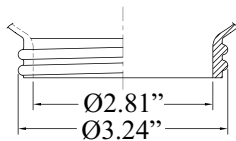


FITTER NECK (F)



ITEM NO.	HEIGHT	WIDTH	ID (NECK)	OD (NECK)	MATERIAL	COLOR
25108-CL-3F	7.80"	4.00"	2.81"	3.14"	Acrylic	Clear
25108-WH-3F	7.80"	4.00"	2.81"	3.14"	Acrylic	White
15108-CL-3F	7.80"	4.00"	2.81"	3.14"	Polycarbonate	Clear
15108-WH-3F	7.80"	4.00"	2.81"	3.14"	Polycarbonate	White

SCREW NECK (S)



ITEM NO.	HEIGHT	WIDTH	ID (NECK)	OD (NECK)	MATERIAL	COLOR
25108-CL-3S	7.80"	4.00"	2.81"	3.24"	Acrylic	Clear
25108-WH-3S	7.80"	4.00"	2.81"	3.24"	Acrylic	White
15108-CL-3S	7.80"	4.00"	2.81"	3.24"	Polycarbonate	Clear
15108-WH-3S	7.80"	4.00"	2.81"	3.24"	Polycarbonate	White

MAXIMUM TEMPERATURES

No warranty or guarantee is expressed or implied as only the user can determine the suitability of a product for his or her purpose.

Maximum working temperature is 90° C for Acrylic and between 100° C and 125° C for Polycarbonates, depending on products chosen.

Actual wattage ratings are influenced by many factors including Fixture Type, Bulb Location and Ambient Temperature.

ITEM NUMBER SUFFIX CODES

STYLE NUMBER	COLOR	NECK
25108 = Acrylic	CL = CLEAR	3F= 3.14" Fitter
15108 = Polycarbonate		3S= 3.24" Screw

Dimensions are nominal

Series 25001 Jelly Jars

DESCRIPTION

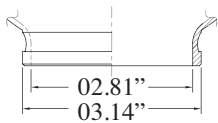
Crown Plastics jelly jars are designed for commercial and residential applications and are available with fitter and screw necks.

MATERIALS

- **Acrylic** - UV resistant with continuous operating temperature up to 90°C and transmittance of 92% (application dependent). Acrylic jelly jars are available in clear.

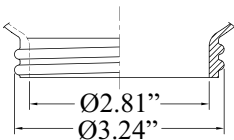


FITTER NECK (F)



ITEM NO.	HEIGHT	WIDTH	ID (NECK)	OD (NECK)	MATERIAL	COLOR
25001-CL-3F	6.00"	3.50"	2.81"	3.14"	Acrylic	Clear

SCREW NECK (S)



ITEM NO.	HEIGHT	WIDTH	ID (NECK)	OD (NECK)	MATERIAL	COLOR
25001-CL-3S	6.00"	3.50"	2.81"	3.24"	Acrylic	Clear

MAXIMUM TEMPERATURES

No warranty or guarantee is expressed or implied as only the user can determine the suitability of a product for his or her purpose. Maximum working temperature is 90° C for Acrylic and between 100° C and 125° C for Polycarbonates, depending on products chosen. Actual wattage ratings are influenced by many factors including Fixture Type, Bulb Location and Ambient Temperature.

ITEM NUMBER SUFFIX CODES

STYLE NUMBER	COLOR	NECK
25001 = Acrylic	CL = CLEAR	3F= 3.14" Fitter 3S= 3.24" Screw

Dimensions are nominal